



# Smart Facility Management Using IoT & LoRaWAN

Transforming traditional facility management into automated, real-time, and data-driven operations

# Meeting Today's Facility Management Challenges

Today's facility managers face mounting pressures that traditional approaches struggle to address:

## Rising Operational Costs

Energy, maintenance, and staffing expenses continue to climb whilst budgets remain constrained

## Sustainability Requirements

Regulatory pressures and corporate initiatives demand significant reductions in resource consumption

## Experience Expectations

Building occupants expect comfortable, responsive environments that support their productivity and wellbeing

## Asset Performance

Maximising equipment lifespan whilst preventing costly downtime requires visibility that manual inspections cannot provide

# Agenda

01

---

## IoT & LoRaWAN Fundamentals

Understanding the technology backbone and why it matters for modern facilities

03

---

## Deployment Scenarios

How different facility types can leverage smart management solutions

05

---

## Business Benefits

Quantifiable advantages that impact your bottom line and operational excellence

02

---

## Key Solution Areas

Exploring the range of applications from HVAC monitoring to waste management

04

---

## System Architecture

The technical framework that enables seamless integration and operation

06

---

## Future Vision

The evolving landscape of smart facility management and sustainability

# IoT & LoRaWAN: The Technology Foundation

## Internet of Things (IoT)

Network of physical devices embedded with sensors, software and connectivity that enables them to collect and exchange data

## LoRaWAN

Low Power, Wide Area Network protocol designed for wireless battery-operated devices in regional, national or global networks

- 10+ year battery life for sensors
- 10+ km range in rural areas; 1-2 km in urban settings
- Secure, bi-directional communication
- Single gateway can support thousands of devices



# Key Solution Areas

Our comprehensive approach addresses the full spectrum of facility management needs:



## HVAC & Chilled Water

Real-time monitoring of temperature, pressure, flow rates and system performance



## Smart Metering

Granular tracking of electricity, water and gas consumption across zones



## Indoor Air Quality

Continuous monitoring of CO2, particulates, VOCs, temperature and humidity



## Smart Lighting

Occupancy-based control, daylight harvesting and automated scheduling



## Predictive Maintenance

Vibration, temperature and acoustic anomaly detection for early intervention



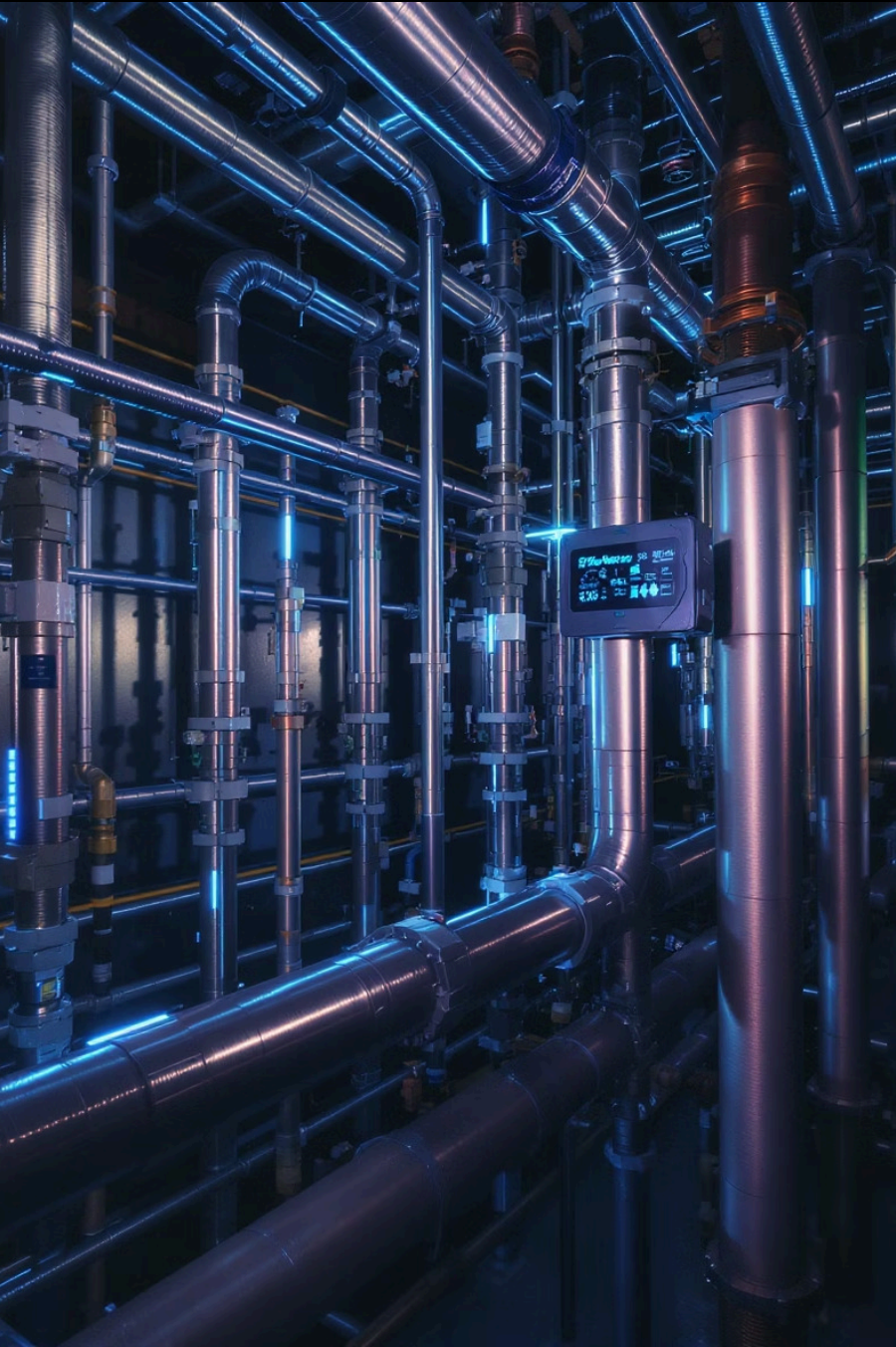
## Space Utilization

Real-time occupancy tracking for optimised space planning and usage



## Waste Management

Fill-level monitoring for optimised collection routes and schedules



# HVAC & Chilled Water Monitoring

Moving beyond scheduled maintenance to intelligent, condition-based operations

## Continuous Performance Monitoring

Track temperature differentials, flow rates, and pressure points across your system to identify inefficiencies before they impact comfort

## Predictive Failure Detection

Sensors detect subtle changes in vibration patterns and electrical signatures to forecast potential component failures weeks in advance

## Energy Optimisation

Machine learning algorithms continuously adjust system parameters based on occupancy, weather patterns and historical performance data

Case study: A 150,000 sq ft commercial building reduced HVAC energy consumption by 23% and maintenance costs by 31% within 12 months of deployment

# Smart Energy & Water Metering

Transform your resource management with granular, real-time consumption data



## Visibility

Sub-metering provides detailed consumption data by zone, floor, or equipment type, revealing previously hidden usage patterns



## Leak Detection

Continuous monitoring identifies anomalous consumption, alerting you to potential water leaks or electrical faults within minutes



## Demand Management

Intelligent load shedding and peak demand management reduce utility charges whilst maintaining occupant comfort



## Billing Accuracy

Automated, precise tenant billing eliminates estimation errors and disputes while reducing administrative overhead



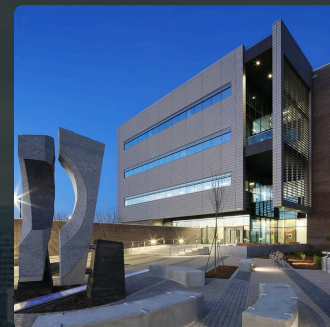
# Deployment Areas

Our solutions adapt to diverse facility types with customised configurations:



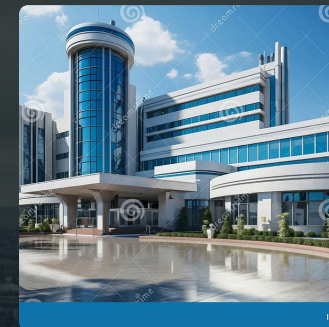
## Commercial Buildings

Optimise comfort and efficiency in office towers, mixed-use developments and corporate campuses



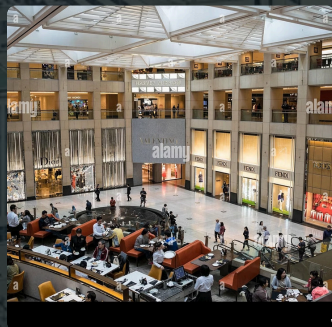
## Government Facilities

Meet sustainability mandates and enhance security in administrative buildings and public services



## Healthcare

Maintain critical environments and tracking assets in hospitals and medical centres



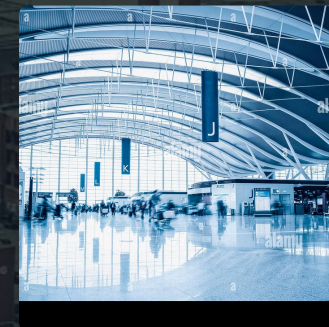
## Retail & Malls

Enhance shopper experience whilst reducing operational expenses across large public spaces



## Industrial Facilities

Ensure reliable operations and compliance in manufacturing plants and warehouses



## Transport Hubs

Manage high-traffic environments efficiently in airports, stations and transport centres

# System Architecture

End-to-End Solution for Complete Facility Intelligence



## IoT Sensors

Battery-powered wireless devices installed throughout facilities to measure specific parameters



## LoRaWAN Gateways

Strategic placement provides complete coverage with minimal infrastructure (1 gateway per 50,000-100,000 sq ft)



## Cloud Platform

Secure, scalable backend processes sensor data and applies analytics for actionable insights



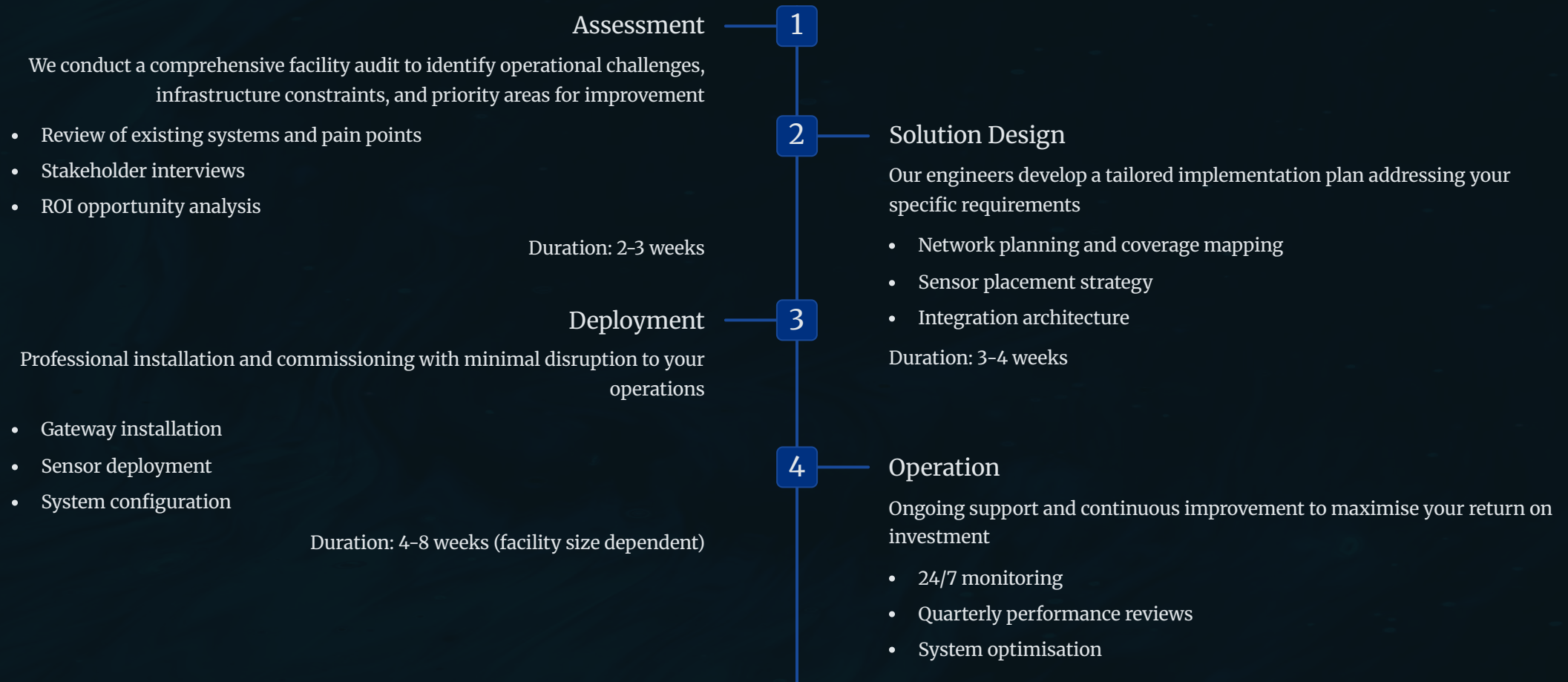
## Management Interface

Intuitive dashboards and mobile apps deliver real-time information and alerts to relevant stakeholders

- ③ Our architecture is designed for easy integration with existing BMS systems through standard protocols and APIs, preserving your current investments while enhancing capabilities.

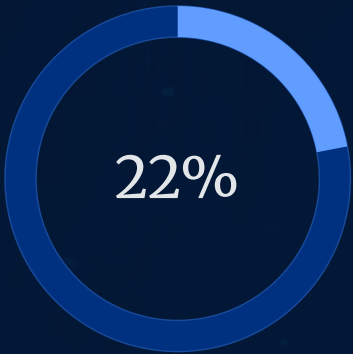
# Implementation Process

Our structured approach ensures successful deployment with minimal disruption:



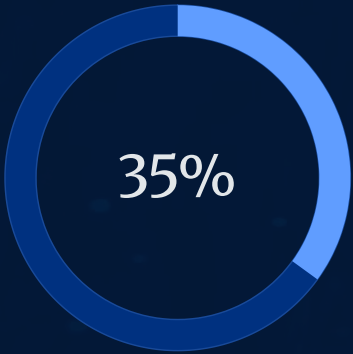
# Key Business Benefits

Smart facility management delivers quantifiable returns across multiple dimensions:



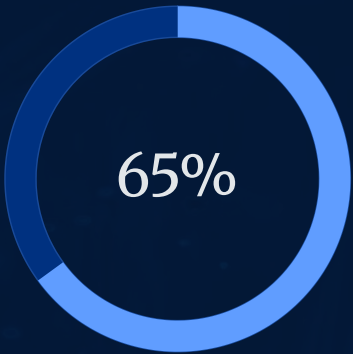
## Average Energy Savings

Reduction in energy consumption through optimised operations and demand management



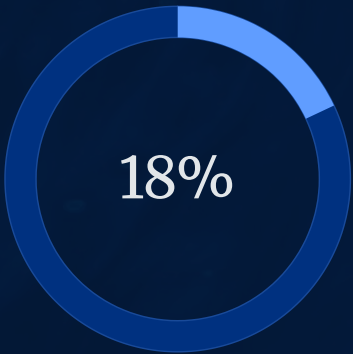
## Maintenance Cost Reduction

Decrease in reactive maintenance expenses through predictive intervention



## Faster Response Times

Improvement in issue detection and resolution speed



## Space Utilisation Improvement

More efficient use of available square footage through occupancy insights

Typical ROI timeframe: 12-24 months, with some applications delivering payback in as little as 6 months

# Beyond Cost Savings

While financial benefits are substantial, smart facility management delivers additional strategic advantages:

## Enhanced Occupant Experience

Improved comfort, air quality and responsiveness contribute to higher productivity, lower absenteeism and better tenant retention

## Risk Mitigation

Early detection of potential issues (water leaks, equipment failures, air quality problems) prevents costly damage and liability exposure

## Regulatory Compliance

Automated monitoring and reporting simplify adherence to increasingly stringent building codes, environmental regulations and health standards

## Data-Driven Decision Making

Comprehensive analytics provide unprecedented visibility into operations, enabling better capital planning and resource allocation

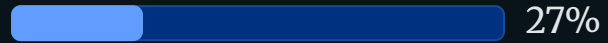
"The greatest value we've found isn't just in the immediate cost savings, but in the newfound ability to make truly informed decisions about our facilities based on real data rather than assumptions."

— Operations Director, Major UK Commercial Property Management Firm



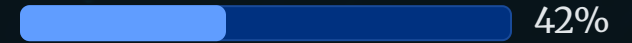
# Case Study: Abu Dhabi Place

250,000 sq ft Multi-tenant Office Complex in Abu Dhabi



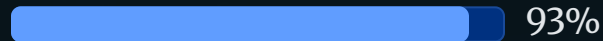
## Energy Reduction

Achieved a 27% year-over-year decrease in total building energy consumption



## Maintenance Savings

Realized a 42% reduction in reactive maintenance calls through predictive intervention



## Tenant Satisfaction

Attained a 93% post-implementation approval rating for building management

"The transformation has been remarkable. We've gone from constantly reacting to problems to preventing them before they impact our tenants. The data has revealed optimization opportunities we never knew existed."

**ROI Achievement:** Achieved full system payback in 16 months, with ongoing annual savings of AED 790,000

# Competitive Advantages

Why our approach to smart facility management stands apart:



## Non-invasive Deployment

Wireless sensors install in minutes without disrupting operations or requiring extensive infrastructure changes

## Vendor Agnostic

Works alongside existing systems from any manufacturer, avoiding proprietary lock-in and preserving previous investments

## Future-proof Architecture

Modular design allows for easy expansion to additional areas and integration of new sensor types as needs evolve

# The Future of Facility Management

Smart facilities aren't just about efficiency—they're the foundation of sustainable, resilient, and human-centered built environments.



## Sustainability Leadership

Meet ambitious carbon reduction targets and demonstrate environmental commitment through data-driven resource management



## Digital Transformation

Position your organisation at the forefront of the built environment revolution, driving innovation through intelligent operations



## Human-Centered Design

Create environments that genuinely respond to occupant needs, enhancing wellbeing, productivity and satisfaction

Begin your journey to smarter, more sustainable facility management today. Our team is ready to develop a customised roadmap for your specific needs and challenges.

[Schedule a Consultation](#)[Download Case Studies](#)